

BACCALAURÉAT PROFESSIONNEL

ÉPREUVE ORALE SPÉCIFIQUE – ANGLAIS

**MÉTIERS DE L'ÉLECTRICITÉ
ET DE SES ENVIRONNEMENTS CONNECTÉS**

**SECTION EUROPÉENNE
DURÉE DE L'ÉPREUVE : 20 minutes**

La calculatrice et le dictionnaire ne sont pas autorisés.

Photovoltaic solar panels

Situation

You are working in a design office based in Sydney, Australia, that offers building solutions in photovoltaic solar systems.

You have to offer different kinds of solar panels to your customers according to their buildings.

Tasks

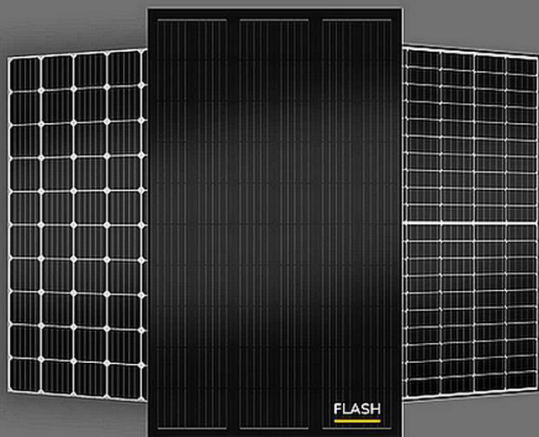
You are expected to:

- 1/ Explain why you have chosen this brand of photovoltaic panels for these projects.
- 2/ Indicate the solar panel references to a client that lives in a house in the countryside and needs self-consumption. Justify your choice.
- 3/ Indicate the solar panel references for an industrial site which is connected to the grid. Justify your choice.

Vocabulary:

- **grid:** réseau (électrique)
- **brand:** marque
- **reliability:** fiabilité
- **production batch:** lot de production
- **producible:** production (électrique)

FLASH[®] - Photovoltaic



Electricity generation

Monocrystalline panel

FLASH[®], a premium performance photovoltaic panel ideal for self-consumption.

FLASH[®] - Quality and Warranty

Reliability and competitiveness

Our FLASH[®] photovoltaic panel is manufactured to exacting standards with each production batch being systematically audited by a specialized third-party auditing firm.

The FLASH[®] panel's high-efficiency monocrystalline cells as well as the care and quality we bring to its design make it one of the most competitive solutions on the market.



DualSun's double warranty

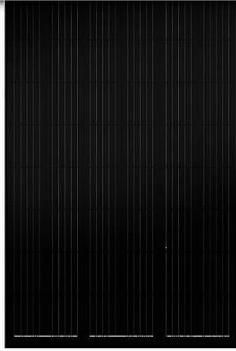
Our panels meet the highest quality standards on the market.

They are designed to last over time.

We pledge the quality of our products by offering a **double warranty**, an unprecedented deal on the solar market.

- **25-year** performance warranty for photovoltaic **efficiency**
- **10-year** premium **parts and labor** warranty for FLASH[®] panel installations





FLASH® Black

DualSun's **FLASH® Black** photovoltaic panel is designed for self-consumption projects without compromising on aesthetics and performance in order to maintain the elegance of the building.

- + Robustness, reliability and endurance: panel and producible guaranteed 25 years
- + Full black finish: black and homogeneous surface [in 2022](#)
- + Environmentally friendly: clean energy and 94.7% recyclable panels
- + Perfect in combination with [the SPRING® Hybrid Panel](#)

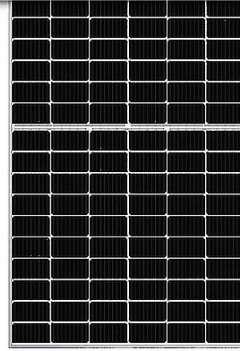
Ideal solution for:



Residential rooftop installations

Datasheets and certifications:

- FLASH® 375 Black
- FLASH® 320 Black
- FLASH® 300 Black



FLASH® Grey

DualSun's **FLASH® Grey** photovoltaic panel is designed for photovoltaic projects requiring very good performance per m² of roof area, achieved thanks to the panel's half-cell technology.

- + Robustness, reliability and endurance: panel and producible guaranteed 25 years
- + Exceptional performance: half-cell photovoltaic technology for better efficiency
- + Environmentally friendly: Clean energy and 94.7% recycled panels

Ideal solution for:



Residential rooftop installations



Commercial Roofing Installations



Industrial Roofing Installations



Agricultural Roofing Installations

Datasheets and certifications:

- FLASH® 360 Half-Cut Grey